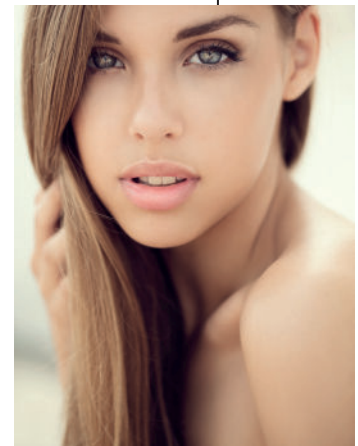
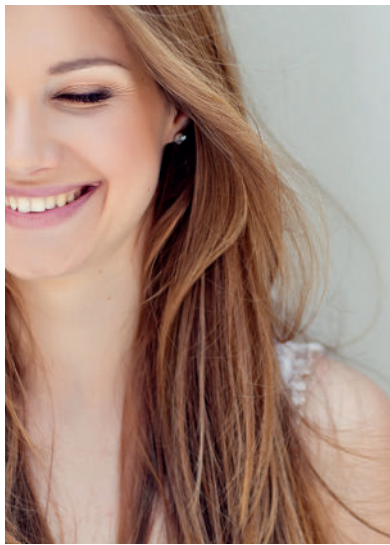


COSMETIZE

PRIVATE LABEL COSMETICS

NO. 1 PRIVATE LABEL COSMETICS
MANUFACTURER, DEVELOPER
AND CONCEPT DESIGNER.



PACKAGING



item code SZ/FB7419H

dimensions Ø 8,0 mm; l - 27,0 mm

effect volumizing

additional info fiber brush



item code SZ/APS109B

dimensions Ø 8,0 mm; l - 26,0 mm

effect volumizing

additional info fiber brush



item code SZ/BmaGS

dimensions Ø 8,0 mm; l - 30,0 mm

effect volumizing

additional info fiber brush



item code SZ/BmkZZ

dimensions Ø 7,0 mm; l - 27,0 mm

effect curling

additional info fiber brush



item code SZ/FNma

dimensions Ø 6,0 mm; l - 27,0 mm

effect curling

additional info fiber brush



item code SZ/APP19S55

dimensions Ø 8,5 mm; l - 26,0 mm

effect curling

additional info plastic brush



item code SZ/BmaZZ

dimensions Ø 8,0 mm; l - 27,0 mm

effect lengthening

additional info plastic brush



item code SZ/BmaLL

dimensions Ø 7,0 mm; l - 26,0 mm

effect lengthening

additional info plastic brush



item code SZ/BmaHA

dimensions Ø 5,5mm; l - 28,0 mm

effect lengthening

additional info fiber brush



item code SZ/BmaR

dimensions Ø 9,0 mm; l - 29,0 mm

effect volumizing

additional info fiber brush



item code SZ/BmaPU

dimensions Ø 7,5 mm; l - 27,0 mm

effect volumizing

additional info plastic brush



item code SZ/DLJM_03

dimensions Ø 6,0 mm; l - 26,0 mm

effect volumizing

additional info plastic brush



item code SZ/KS_005

dimensions Ø 8,0 mm; l - 26,0 mm

effect lengthening

additional info plastic brush

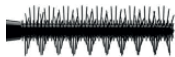


item code SZ/BimaW

dimensions Ø 8,5 mm; l - 26,0 mm

effect lengthening & volumizing

additional info fiber brush



item code SZ/KS_028

dimensions Ø 8,0 mm; l - 26,0 mm

effect lengthening & curling

additional info plastic brush



item code A/BlgC

dimensions Ø 4,0 mm; l - 13,0 mm

additional info flocked applicator



item code A/BlgRG

dimensions Ø 5,0 mm; l - 16,0 mm

additional info flocked applicator



item code A/AFlg

dimensions Ø 4,0 mm; l - 13,0 mm

additional info flocked applicator



item code A/BlgBDG

dimensions Ø 4,0 mm; l - 13,0 mm

additional info flocked applicator



item code A/ET262

dimensions Ø 5,0 mm; l - 15,0 mm

additional info flocked applicator



item code PD/Blg3D

dimensions Ø 3,0 mm; l - 9,0 mm

additional info brush



item code A/PEL005

dimensions Ø 1,5 mm; l - 10,0 mm

additional info brush



item code PD/Bkpd

dimensions Ø 2,0 mm; l - 7,0 mm

additional info felt tip